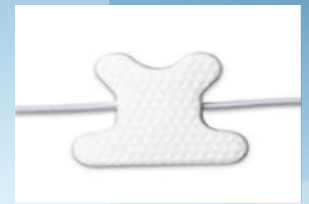


### TriplePlay™ Airflow Sensors - Disposable

|               |  |
|---------------|--|
| 10-10000-0010 | TriplePlay™ Airflow Sensor, Disposable, Neonatal, 10 Pk  |
| 10-10000-0050 | TriplePlay™ Airflow Sensor, Disposable, Neonatal, 50 Pk  |
| 10-10000-0210 | TriplePlay™ Airflow Sensor, Disposable, Infant, 10 Pk    |
| 10-10000-0250 | TriplePlay™ Airflow Sensor, Disposable, Infant, 50 Pk    |
| 10-10000-0310 | TriplePlay™ Airflow Sensor, Disposable, Pediatric, 10 Pk |
| 10-10000-0350 | TriplePlay™ Airflow Sensor, Disposable, Pediatric, 50 Pk |
| 10-10000-0410 | TriplePlay™ Airflow Sensor, Disposable, Small, 10 Pk     |
| 10-10000-0450 | TriplePlay™ Airflow Sensor, Disposable, Small, 50 Pk     |
| 10-10000-0510 | TriplePlay™ Airflow Sensor, Disposable, Medium, 10 Pk    |
| 10-10000-0550 | TriplePlay™ Airflow Sensor, Disposable, Medium, 50 Pk    |
| 10-10000-0610 | TriplePlay™ Airflow Sensor, Disposable, Large, 10 Pk     |
| 10-10000-0650 | TriplePlay™ Airflow Sensor, Disposable, Large, 50 Pk     |



### TriplePlay™ Airflow Sensors - Reusable

|               |   |
|---------------|---|
| 10-14000-0201 | TriplePlay™ Reusable Airflow Sensor - Infant    |
| 10-14000-0301 | TriplePlay™ Reusable Airflow Sensor - Pediatric |
| 10-14000-0401 | TriplePlay™ Reusable Airflow Sensor - Small     |
| 10-14000-0501 | TriplePlay™ Reusable Airflow Sensor - Medium    |



### FM Airflow Sensor Interface Cables

|               |   |
|---------------|---|
| 12-10220-0001 | NOX A1 & T3s Airflow Interface Cable, Keyhole |
|---------------|---|

### PerfectFit™ 3D Respiratory Effort Belts - Disposable

|               |  |
|---------------|--|
| 18-13217-0001 | PerfectFit™ 3D REUSABLE-Disposable Kit includes: 2- PerfectFit™ 3D sensors, 5-50 yard rolls of Effort Belt Strap, Keyhole – Nox A1 & T3s |
| 11-45010-0001 | Perfect Fit 3D Effort Module, Abdomen, NOX-A1 & T3s, Keyhole   |
| 11-45010-0002 | Perfect Fit 3D Effort Module, Chest, NOX-A1 & T3s, Keyhole   |
| 11-14001-5001 | PerfectFit™ 3D Button Hole Effort Belt Strap, 50 yard roll (20 studies)  |
| 11-14001-2501 | PerfectFit™ 3D Button Hole Effort Belt Strap, 250 yard (Five 50 yard rolls) (100 studies)  |



### FastTrack™ Effort Pack System - Disposable

|               |  |
|---------------|--|
| 11-44000-3002 | FastTrack™ Effort Pack, Pediatric              |
| 11-44000-3020 | FastTrack™ Effort Pack, Pediatric, 20 Pack Box |
| 11-44000-3040 | FastTrack™ Effort Pack, Pediatric, 40 Pack Box |
| 11-44000-7502 | FastTrack™ Effort Pack, Adult                  |
| 11-44000-7520 | FastTrack™ Effort Pack, Adult, 20 Pack Box     |
| 11-44000-7540 | FastTrack™ Effort Pack, Adult, 40 Pack Box     |



### FastTrack™ Starter Kit - Disposable

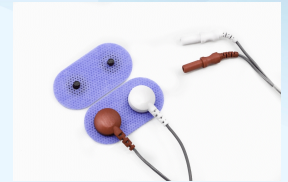
|               |  |
|---------------|--|
| 18-01026-0301 | FastTrack™ Starter Kit, Pediatric, Keyhole, Nox A1 & T3s |
| 18-01026-0601 | FastTrack™ Starter Kit, Adult, Keyhole, Nox A1 & T3s     |

### FastTrack™ Interface Kit

|               |  |
|---------------|--|
| 18-01808-0001 | FastTrack™ Effort Interface Kit, Keyhole, Nox A1 & T3s |
|---------------|--|

### DualSnap™ Disposable Biopotential Electrodes

|               |   |
|---------------|---|
| 13-40000-0005 | DualSnap™ Biopotential Electrode Patch, Single, (1 package of 5 patches)    |
| 13-40000-0020 | DualSnap™ Biopotential Electrode Patch, 20 Pack, (20 packages of 5 patches) |
| 13-40000-0050 | DualSnap™ EMG Electrode, 50 Pack  |
| 13-14000-6020 | DualSnap™ Lead Wire, 60", 20 Pack   |
| 13-14000-1020 | DualSnap™ Lead Wire, 100", 20 Pack  |
| 13-14000-1220 | DualSnap™ Lead Wire, 120", 20 Pack  |
| 12-10223-0001 | Leg EMG Interface Cable, Limb 1 or Limb 2, NOX A1 & T3s, Keyhole            |
| 19-20003-0001 | Lead Wire Adapter, 1.5mm DIN to Keyhole Connector                           |



### MotionWave™ Disposable EMG Electrodes

|               |   |
|---------------|---|
| 13-41000-0050 | MotionWave™ Disposable Wired Dual EMG Electrode, 120in, 50 Pack |
| 13-41001-0050 | MotionWave™ Disposable Wired Dual EMG Electrode, 60in, 50 Pack  |
| 19-20003-0001 | Lead Wire Adapter, 1.5mm DIN to Keyhole Connector               |



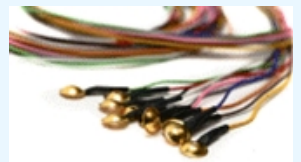
### TripleChin™ Disposable EMG Electrode Patch

|               |   |
|---------------|---|
| 13-32000-0050 | Chin Electrode Patch, 14 inch wire, Nox A1 and T3s, 50 Pack |
|---------------|---|



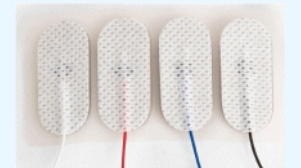
### PrecisionGold™ Disposable EEG Electrodes

|               |  |
|---------------|--|
| 13-10100-4010 | 9mm Disposable Gold Cup EEG Electrode, 40" (1m), 10pack    |
| 13-10100-6010 | 9mm Disposable Gold Cup EEG Electrode, 60" (1.5m), 10pack  |
| 13-10100-8010 | 9mm Disposable Gold Cup EEG Electrode, 80" (2m), 10pack    |
| 13-10100-1010 | 9mm Disposable Gold Cup EEG Electrode, 100" (2.5m), 10pack |
| 13-10300-8015 | 6mm Disposable Pediatric EEG Gold Cup, 80" (2m) (15/pk)    |



### FlexPro™ Biopotential Electrodes

|               |   |
|---------------|---|
| 13-42000-0001 | FlexPro™ Disposable Biopotential Electrode (4 pcs)  |
| 13-42000-0010 | FlexPro™ Disposable Biopotential Electrode (10 pks) |



### XM™ Extremity Movement Sensor

|               |  |
|---------------|--|
| 13-50000-0010 | XM™ Extremity Movement Sensor, (10 pk)               |
| 13-50000-0050 | XM™ Extremity Movement Sensor, (50 pk)               |
| 12-10180-0001 | Movement Sensor Interface Cable, 1.5mm DIN Connector |



|               |   |
|---------------|---|
| 19-20003-0001 | Lead Wire Adapter, 1.5mm DIN to Keyhole Connector |
|---------------|---|

### MyCustomPSG Kit™

A CUSTOMIZED COLLECTION OF SINGLE-USE ELECTRODES AND SENSORS FOR PSG TESTING

In addition to Dymedix Disposable EEG, EMG and Adhesive Surface Electrodes, **YOU CHOOSE** any of the additional sensors and electrodes to complete your custom PSG Sensor Kit.

For a **NO OBLIGATION** quote, choose the contents of your MyCustomPSG Kit™ using the link below. A Dymedix Clinical Specialist will contact you ASAP with pricing and ordering information.

[www.dymedix.com/mycustompsgkit](http://www.dymedix.com/mycustompsgkit)

