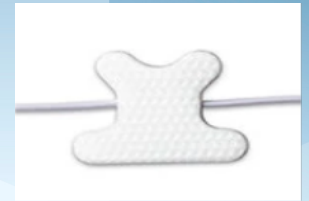


### TriplePlay™ Airflow Sensors - Disposable

10-10000-0010	TriplePlay™ Airflow Sensor, Disposable, Neonatal, 10 Pk
10-10000-0050	TriplePlay™ Airflow Sensor, Disposable, Neonatal, 50 Pk
10-10000-0210	TriplePlay™ Airflow Sensor, Disposable, Infant, 10 Pk
10-10000-0250	TriplePlay™ Airflow Sensor, Disposable, Infant, 50 Pk
10-10000-0310	TriplePlay™ Airflow Sensor, Disposable, Pediatric, 10 Pk
10-10000-0350	TriplePlay™ Airflow Sensor, Disposable, Pediatric, 50 Pk
10-10000-0410	TriplePlay™ Airflow Sensor, Disposable, Small, 10 Pk
10-10000-0450	TriplePlay™ Airflow Sensor, Disposable, Small, 50 Pk
10-10000-0510	TriplePlay™ Airflow Sensor, Disposable, Medium, 10 Pk
10-10000-0550	TriplePlay™ Airflow Sensor, Disposable, Medium, 50 Pk
10-10000-0610	TriplePlay™ Airflow Sensor, Disposable, Large, 10 Pk
10-10000-0650	TriplePlay™ Airflow Sensor, Disposable, Large, 50 Pk



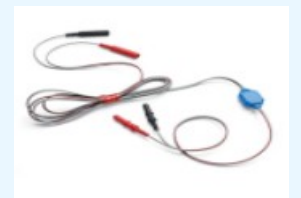
### TriplePlay™ Airflow Sensors - Reusable

10-14000-0201	TriplePlay™ Reusable Airflow Sensor - Infant
10-14000-0301	TriplePlay™ Reusable Airflow Sensor - Pediatric
10-14000-0401	TriplePlay™ Reusable Airflow Sensor - Small
10-14000-0501	TriplePlay™ Reusable Airflow Sensor - Medium



### FM Airflow Sensor Interface Cables

	<b>FM1 (Apnea, Hypopnea)</b>
12-10016-0001	FM1 - Embla
	<b>FM2 (Apnea, Hypopnea, UARS)</b>
12-40201-0001	FM2 - Embla
	<b>FM3 (Apnea, Hypopnea, UARS, Snore)</b>
12-40203-0001	FM3 - Embla
	<b>FM4 (2 Airflow outputs - Apnea, Hypopnea, UARS)</b>
12-40306-0001	FM4 - Embla N7000 Patient Unit
	<b>FM5 (2 Airflow outputs - Apnea, Hypopnea, UARS) + (1 Snore Output)</b>
12-40316-0001	FM5 - Embla N7000 Patient Unit
	<b>iFM (Infant Filtration Module)</b>
12-40321-0001	iFM - Embla



### Accusnore™ Snore Sensor - Disposable

10-21001-0610	Accusnore™ Snore Sensor, Disposable, Large, 10 Pk
10-21001-0650	Accusnore™ Snore Sensor, Disposable, Large, 50 Pk
10-15000-0601	Accusnore™ Snore Sensor, Reusable
12-20004-0001	Accusnore™ Reusable Interface Cable, Keyhole



### PerfectFit™ 2 Respiratory Effort Belts – Reusable - Adult

<b>18-14213-0602</b>	<b>PerfectFit™ 2 R/S Adult Kit includes: 2- Perfect Fit™ 2 R/S sensors, 2-45" Effort Belt Straps, 2-60" Effort Belt Straps, and 2- R/S Interface Cables, Embla</b>
11-42406-0601	PerfectFit™ 2 R/S Adult Effort Belt Sensor, Abdomen
11-42306-0601	PerfectFit™ 2 R/S Adult Effort Belt Sensor, Chest
12-42000-0001	PerfectFit™ 2 R/S Interface Module Cable, Abdomen, Keyhole - Embla
12-42001-0001	PerfectFit™ 2 R/S Interface Module Cable, Chest, Keyhole - Embla
11-43300-4502	PerfectFit™ 2 Effort Belt Strap, Large, 45", 2 Pack
11-43300-6002	PerfectFit™ 2 Effort Belt Strap, XL, 60", 2 Pack
11-43300-7502	PerfectFit™ 2 Effort Belt Strap, XXL, 75", 2 Pack



### PerfectFit™ 2 Respiratory Effort Belts – Reusable - Pediatric

<b>18-12213-0302</b>	<b>PerfectFit™ 2 R/S Pediatric Kit includes: 2- Perfect Fit™ 2 R/S sensors, 2-15" Effort Belt Strap, 2-25" Effort Belt Strap, and 2-35" Effort Belt Strap and 2- R/S Interface Cable, Embla</b>
11-22406-0601	PerfectFit™ 2 R/S Pediatric Effort Belt Sensor, Abdomen
11-22306-0601	PerfectFit™ 2 R/S Pediatric Effort Belt Sensor, Chest
12-42000-0001	PerfectFit™ 2 R/S Interface Module Cable, Abdomen, Keyhole - Embla
12-42001-0001	PerfectFit™ 2 R/S Interface Module Cable, Chest, Keyhole - Embla
11-23300-1502	PerfectFit™ 2 Effort Belt Strap, Infant, 15", 2- Pack
11-23300-2502	PerfectFit™ 2 Effort Belt Strap, Pediatric, 25", 2 Pack
11-23300-3502	PerfectFit™ 2 Effort Belt Strap, Pediatric XL, 35", 2 Pack



### PerfectFit™ 3D Respiratory Effort Belts - Disposable

<b>18-13202-0001</b>	<b>PerfectFit™ 3D REUSABLE-Disposable Kit includes: 2- Perfect Fit™ 3D sensors, 5-50 yard rolls of Effort Belt Strap, Embla</b>
11-45002-0001	PerfectFit™ 3D R/S Effort Belt Sensor, Abdomen, Embla, Keyhole
11-45002-0002	PerfectFit™ 3D R/S Effort Belt Sensor, Chest, Embla, Keyhole
11-14001-5001	PerfectFit™ 3D Button Hole Effort Belt Strap, 50 yard roll (20 studies)
11-14001-2501	PerfectFit™ 3D Button Hole Effort Belt Strap, 250 yard (Five 50 yard rolls) (100 studies)



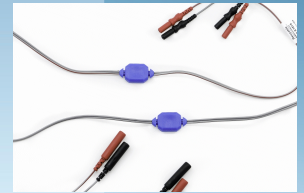
### SnuggleFit™ Infant Effort Belts - Disposable

<b>18-13302-0001</b>	<b>SnuggleFit™ Infant Effort Belt Kit - Embla</b>
10-16000-0301	SnuggleFit™ Infant Effort Belt Module
11-14002-5001	SnuggleFit™ Button Hole Effort Belt Strap, 50yd roll (45 Studies)
11-14002-2501	SnuggleFit™ Button Hole Effort Belt Strap, 250yd roll (225 Studies)
86-30100-0001	SnuggleFit™ Animal Sticker Roll (100ct)
11-15000-0010	SnuggleFit™ Comfort Wrap (10pk)
11-15000-0050	SnuggleFit™ Comfort Wrap (50pk)
11-15000-0100	SnuggleFit™ Comfort Wrap (100pk)



### SnuggleFit™ Interface Cables and Interface Kit

18-01812-0001	SnuggleFit™ Effort Interface Kit - Embla
12-42022-0001	SnuggleFit™ R/S Interface Cable, Abdomen, Embla, Keyhole
12-42023-0001	SnuggleFit™ R/S Interface Cable, Chest, Embla, Keyhole



### FastTrack™ Effort Pack System - Disposable

11-44000-3002	FastTrack™ Effort Pack, Pediatric
11-44000-3020	FastTrack™ Effort Pack, Pediatric, 20 Pack Box
11-44000-3040	FastTrack™ Effort Pack, Pediatric, 40 Pack Box
11-44000-7502	FastTrack™ Effort Pack, Adult
11-44000-7520	FastTrack™ Effort Pack, Adult, 20 Pack Box
11-44000-7540	FastTrack™ Effort Pack, Adult, 40 Pack Box

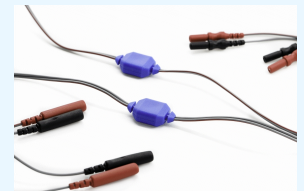


### FastTrack™ Starter Kit - Disposable

18-01022-0301	FastTrack™ Starter Kit, Pediatric, Embla, Keyhole
18-01022-0601	FastTrack™ Starter Kit, Adult, Embla, Keyhole

### FastTrack™ Interface Cables and Interface Kit

18-01802-0001	FastTrack™ Effort Interface Kit, Embla, Keyhole
12-42012-0001	FastTrack™ R/S Interface Cable, Abdomen – Embla, Keyhole
12-42013-0001	FastTrack™ R/S Interface Cable, Chest – Embla, Keyhole



### GentleTouch™ Disposable Respiratory Effort Patch

14-17000-0310	GentleTouch™ Respiratory Effort Patch, 10 pack
14-17000-0320	GentleTouch™ Respiratory Effort Patch, 20 pack
Contact DyMedix	<b>GentleTouch™ R/S Interface Cable Kit, Embla, Keyhole</b>
12-42012-0001	FastTrack™ R/S Interface Cable, Abd – Embla, Keyhole (use w GentleTouch™)
12-42013-0001	FastTrack™ R/S Interface Cable, Chest – Embla, Keyhole (use w GentleTouch™)



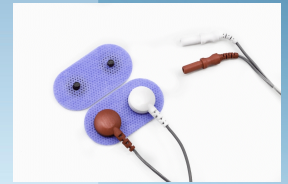
### RespiPack™ Reusable Kit

18-02002-0602	<b>RespiPack™, Reusable, Adult - Embla: Kit Includes - Reusable Airflow Sensor, Reusable Snore Sensor, 2 -PerfectFit™ 2 R/S Effort Sensors, 2-45" Effort Belt Straps, 2-60" Effort Belt Straps, FM2 Airflow Interface Cable, AccuSnore™ Interface Cable</b>
18-02006-0302	<b>RespiPack™, Reusable, Ped - Embla: Kit Includes - Reusable Airflow Sensor, Reusable Snore Sensor, 2 -PerfectFit™ 2 R/S Effort Sensors, 2-15" Effort Belt Straps, 2-25" Effort Belt Straps, 2-35" Effort Belt Straps, FM2 Airflow Interface Cable, AccuSnore™ Interface Cable</b>



### DualSnap™ Disposable Biopotential Electrodes

13-40000-0050	DualSnap™ EMG Electrode, 50 Pack
13-14000-6020	DualSnap™ Lead Wire, 60", 20 Pack
13-14000-1020	DualSnap™ Lead Wire, 100", 20 Pack
13-14000-1220	DualSnap™ Lead Wire, 120", 20 Pack
13-40000-0005	DualSnap™ Biopotential Electrode Patch, Single, (1 package of 5 patches)
13-40000-0020	DualSnap™ Biopotential Electrode Patch, 20 Pack, (20 packages of 5 patches)



### MotionWave™ Disposable EMG Electrodes

13-41000-0050	MotionWave™ Disposable Wired Dual EMG Electrode, 120in, 50 Pack
13-41001-0050	MotionWave™ Disposable Wired Dual EMG Electrode, 60in, 50 Pack



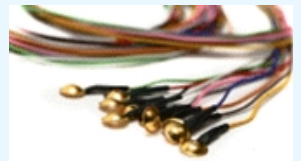
### TripleChin™ Disposable EMG Electrode Patch

13-30000-0050	TripleChin™ Electrode Patch, Adult, 50 Pack
13-31000-0050	TripleChin™ Electrode Patch, Pediatric, 50 Pack



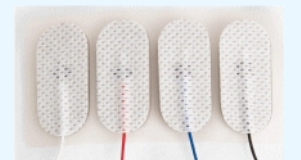
### PrecisionGold™ Disposable EEG Electrodes

13-10100-4010	9mm Disposable Gold Cup EEG Electrode, 40" (1m), 10pack
13-10100-6010	9mm Disposable Gold Cup EEG Electrode, 60" (1.5m), 10pack
13-10100-8010	9mm Disposable Gold Cup EEG Electrode, 80" (2m), 10pack
13-10100-1010	9mm Disposable Gold Cup EEG Electrode, 100" (2.5m), 10pack
13-10300-8015	6mm Disposable Pediatric EEG Gold Cup, 80" (2m) (15/pk)



### FlexPro™ Biopotential Electrodes

13-42000-0001	FlexPro™ Disposable Biopotential Electrode (4 pcs)
13-42000-0010	FlexPro™ Disposable Biopotential Electrode (10 pks)



### XM™ Extremity Movement Sensor

13-50000-0010	XM™ Extremity Movement Sensor, (10 pk)
13-50000-0050	XM™ Extremity Movement Sensor, (50 pk)
12-10180-0001	Movement Sensor Interface Cable, 1.5mm DIN Connector



### MyoFlex™ Movement Sensor

13-50000-0050	MyoFlex™ Movement Sensor, (10 pk)
12-10180-0001	Movement Sensor Interface Cable, 1.5mm DIN Connector



### MyCustomPSG Kit™

A CUSTOMIZED COLLECTION OF SINGLE-USE ELECTRODES AND SENSORS FOR PSG TESTING

In addition to Dymedix Disposable EEG, EMG and Adhesive Surface Electrodes, **YOU CHOOSE** any of the additional sensors and electrodes to complete your custom PSG Sensor Kit.

For a **NO OBLIGATION** quote, choose the contents of your MyCustomPSG Kit™ using the link below. A Dymedix Clinical Specialist will contact you ASAP with pricing and ordering information.

[www.dymedix.com/mycustompsgkit](http://www.dymedix.com/mycustompsgkit)

