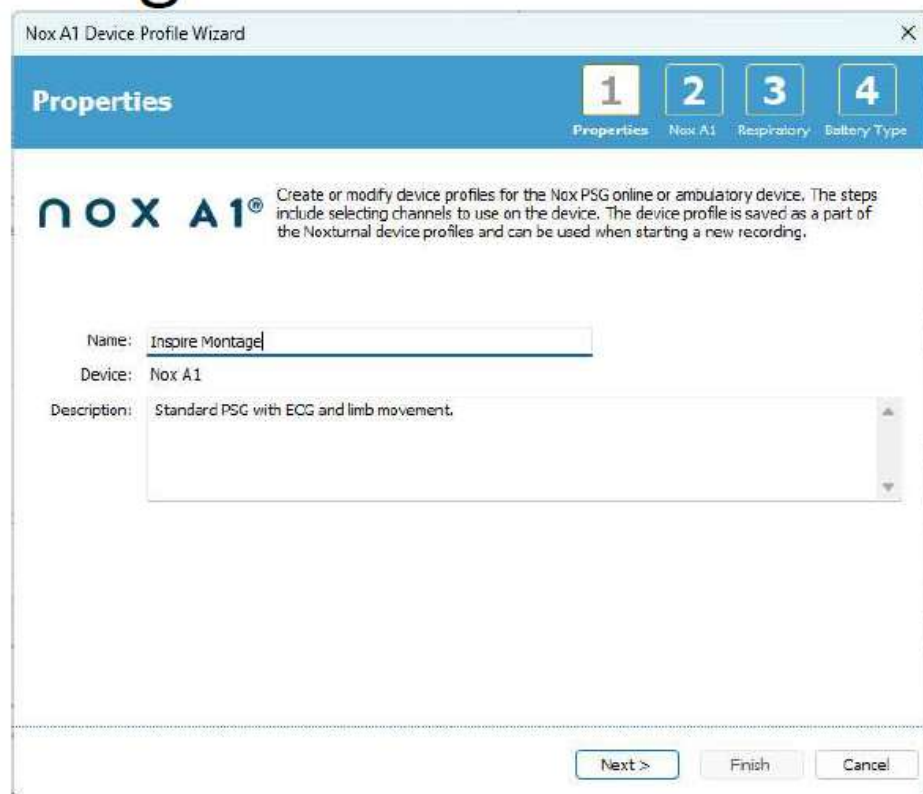
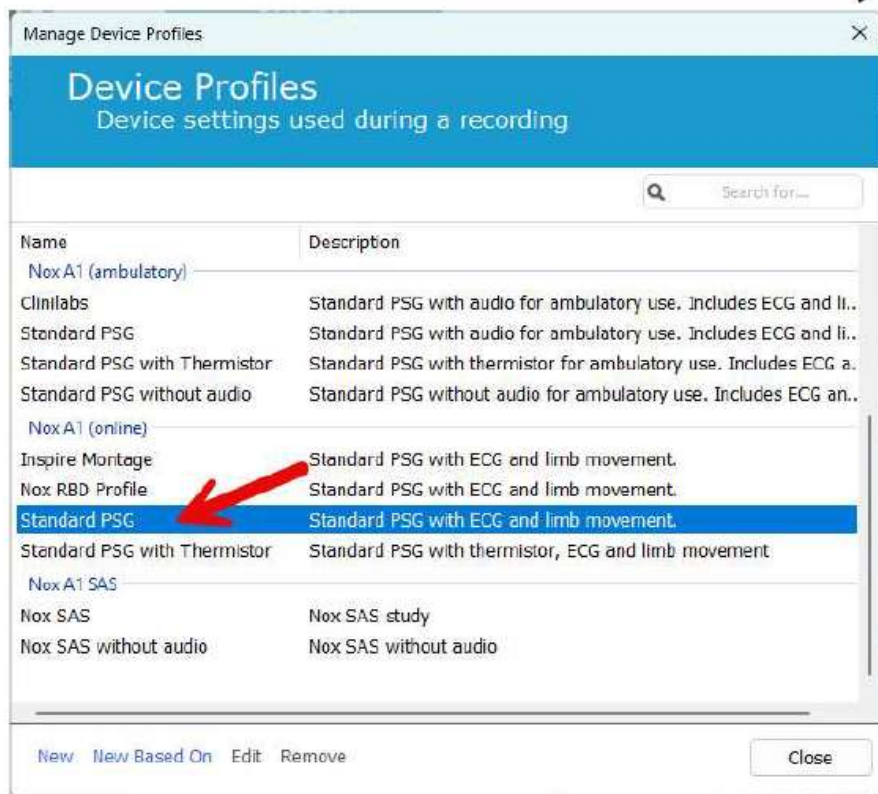
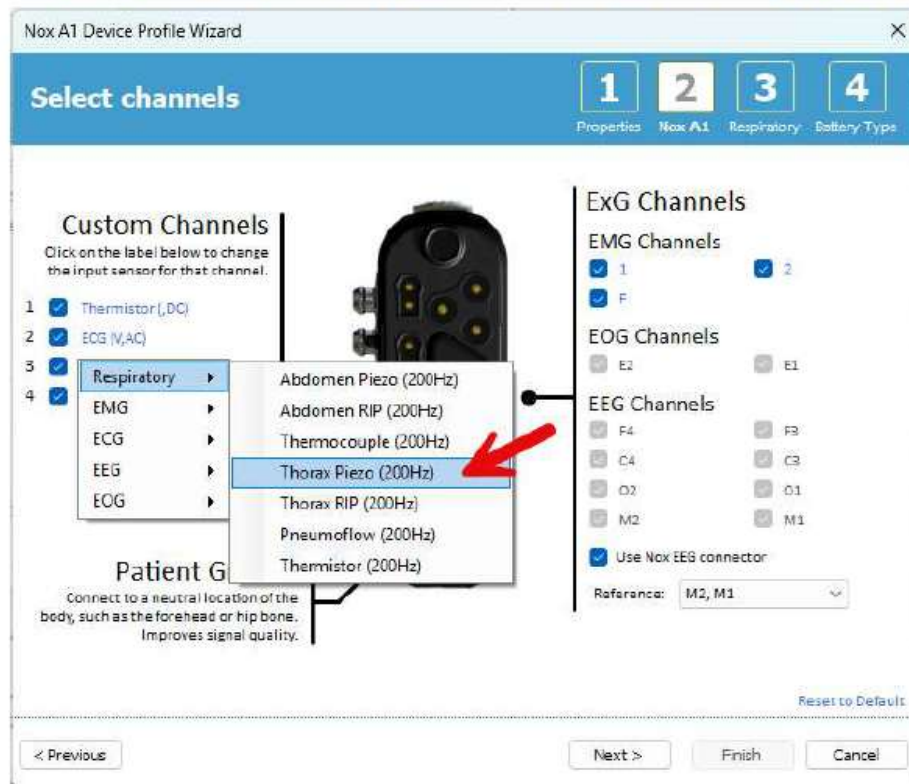


**CREATING A NOX A1
INSPIRE PROFILE
USING DYMEDIX PVDF EFFORT
BELTS**

In Noxturnal, go to “Devices” and choose “Device Profiles”. Highlight one of the default profiles and select “New Based On”, then give it a name.



Under “Custom Channels” convert two of the inputs to Piezo. The limb leads are the usual choice. Click “Next” and “Finish” to save.



When starting the Acquisition, choose the Inspire Device Profile for the Nox A1 and simply plug the belts into the channels that were configured.

The screenshot shows the 'Start Online Recording' window with the following configuration:

- Select Recording Type:** 1 Recording type, 2 Patient
- Recording Type:** Standard PSG with Nox C1
- Devices:**
 - Nox A1:** Profile: Inspire Montage (indicated by a red arrow), SN: 10000160
 - Nox C1:** Profile: Ambient Light Sensor, IP: 192.168.101.30, SN: 931011068, License: DC-Licensed
 - ResMed TxLink 2:** IP: 192.168.101.14
 - Nonin 3150 Oximeter:** BDA: 00:0d-6f-10:45:cd
 - Video Device:** Template: (Only Video) Low quality, IP: 192.168.101.65

Buttons at the bottom: Next >, Standby Mode, Start Recording, Cancel