

THE INDUSTRY LEADER FOR DISPOSABLE SLEEP SENSORS

CONTACT

ALWAYS INNOVATING™  
**DyMedix**®  
DIAGNOSTICS  
DYMEDIX.COM • 888.212.1100

**DyMedix**®  
DIAGNOSTICS  
**DISPOSABLES**

COMPATIBLE WITH ALL PSG AND EEG SYSTEMS | AASM AND JACHO COMPLIANT

# SIMPLE. SENSITIVE. DISPOSABLE.

Increasingly, medical testing is moving toward disposable sensors to help prevent the outbreak of infection and cross-contamination between patients. Dymedix Diagnostics carries a full line of disposable respiratory effort, airflow, EEG, EMG and movement sensor products for the sleep and neurodiagnostic community. Dymedix Diagnostic's exclusive line of disposable sleep sensors are based on our patented technology called polyvinylidene fluoride (PVDF) which delivers very fast, and extremely reliable signals.

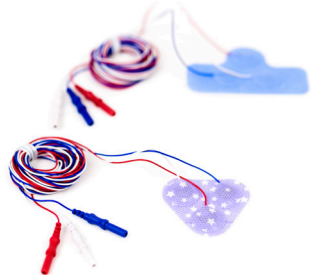
## DISPOSABLE EMG & MOVEMENT SENSORS



**ACCUSNORE™** is the ONLY disposable snore sensor available. Using PVDF technology the AccuSnore™ sensor provides superior sensitivity compared to conventional piezo snore sensors. Adhesive backing allows for multiple placements during testing to ensure accurate capture of snoring activity.



**MOTIONWAVE™ DUAL EMG PATCH** is the only completely disposable pre-measured dual EMG electrode patch. No snaps and no lead wires to clean. Use it once and discard the entire sensor, wires and all.



**TRIPLECHIN™ EMG PATCH** A completely disposable chin EMG electrode patch. Three electrodes perfectly spaced with an adhesive backing for easy application and reliable EMG signals. Available in both adult and pediatric sizes.



**XM EXTREMITY MOVEMENT SENSOR™** A PVDF-based adhesive movement sensor used for upper and lower extremity movement monitoring. No more electrodes coming off or ECG artifact during testing! The XM sensor is extremely sensitive and will respond to even the most subtle PLMS movements.

## DISPOSABLE RESPIRATORY EFFORT BELTS



**FAST TRACK™ EFFORT PACK** is the first and only completely disposable respiratory effort solution. Each FastTrack™ Effort Pack includes single use Chest and Abdomen effort belts incorporating our cut-to-size Button-Hole™ strap system. Plug and Play, Throw it Away.



**PERFECTFIT 3D™ EFFORT SYSTEM** is an affordable respiratory effort system that incorporates PVDF effort modules with Button-Hole™ connectors to where disposable effort belt material is connected. PerfectFit 3D™ is a perfect semi-disposable solution for PSG and HST respiratory effort applications. Half the cost of RIP.



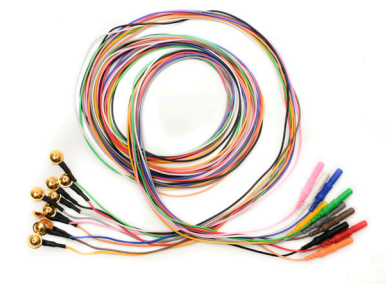
**SNUGGLEFIT™ INFANT EFFORT SYSTEM** is a disposable respiratory effort system designed specifically for infants. The SnuggleFit™ responds to both strain and pressure making it extremely sensitive, and incorporates our disposable cut-to-size Button-Hole™ disposable belt material.

## DISPOSABLE AIRFLOW SENSORS



**TRIPLEPLAY™ PVDF AIRFLOW SENSORS** Extreme sensitivity and response time. Responds to changes in both temperature and pressure providing accurate detection of Apnea, Hypopnea, UARS and Snore, all with one sensor. Designed for use with a TriplePlay FM airflow filtration module.

## DISPOSABLE EEG ELECTRODES



**PRECISION GOLD™ DISPOSABLE EEG ELECTRODES** Disposable gold-plated EEG cup electrodes at a very affordable price. Designed with a flat rim and rounded edges for exceptional patient comfort, especially during extended monitoring. Includes a flexible and durable hub connector with strain relief. Available in 4 different lengths.