



ALWAYS INNOVATING™  
**Dy<sup>M</sup>edix®**  
D I A G N O S T I C S

PRODUCT PORTFOLIO

[dymedix.com](http://dymedix.com) | (888) 212-1100



DyMedix Diagnostics sleep sensors provide peace of mind for sleep specialists and patients alike. Since 1998, we have focused on Always Innovating™ by designing the most innovative diagnostic sleep sensors and electrodes used in clinical sleep disorders studies. Our patented PDVF technology provides accurate, reliable and consistent PSG data with the least amount of testing procedure disruption.

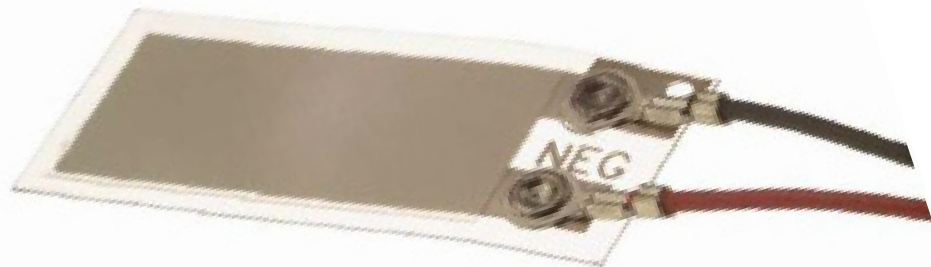
# ABOUT PVDF TECHNOLOGY

PVDF (Polyvinylidene fluoride) is a flexible film that creates its own electrical energy. This makes PVDF the perfect material available for physiological sensors. DyMedix Diagnostics® leads the way in sleep diagnostics innovation by harnessing PVDF energy to provide the most sensitive and reliable respiratory and movement sensors for the sleep diagnostics field.

## PVDF TECHNOLOGY PROVIDES

- Extremely Fast Response Time
- Linear Airflow Waveforms
- No Polarity Reversal
- Thermal + Movement + Pressure

The AASM Manual for Scoring Sleep and Associated Events accepts PVDF for monitoring respiratory effort (Ch. VIII).



## A MESSAGE FROM DYMEDIX DIAGNOSTICS® CEO, JIM MOORE



As you review our product portfolio, I hope you will learn about the innovative state-of-the-art sensors that our company has been providing to the sleep disorders testing community for more than 15 years.

We have built a reputation on our ability to continually develop new products such as our PerfectFit™ PVDF respiratory effort belt solutions (reusable and disposable) that are quickly growing in popularity within the industry. The same is true for our line of reusable and disposable TriplePlay™ airflow sensors that can detect and identify apnea, hypopnea and snore events with only one airflow sensor. Furthermore, we understand at DyMedix that pediatric patients are not little adults. Our new Lullaby™ family of pediatric sensors finally provides the pediatric sleep testing community with a collection of specialized sensors specifically tailored for the pediatric patient.

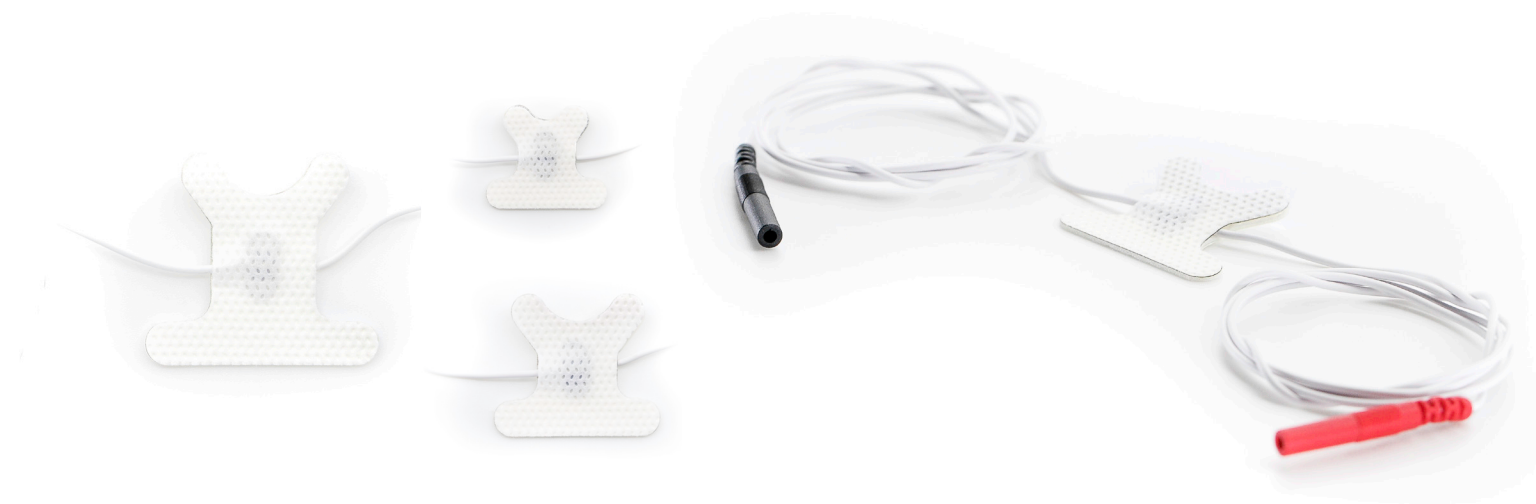
The people and their attitudes here at DyMedix Diagnostics is what I take the most pride in. In addition to our exceptional customer service, we are always looking for a better way of providing higher quality waveform data, increasing ease of use for sleep technologists and increasing patient comfort. I like our company phrase *ALWAYS INNOVATING* as it accurately describes who we are and how we work here at DyMedix Diagnostics. We have several more great innovations in development that we are eager to show you, all in keeping with our promise to the sleep disorders testing industry of being a company that is *ALWAYS INNOVATING*.

I hope this portfolio provides you with a few reasons to get to know DyMedix Diagnostics better. Whether you are a current customer, potential new customer, or a distributor, we look forward to working together with you to bring innovation to the sleep testing community.



# TriplePlay™ AIRFLOW SENSOR

Dymedix TriplePlay™ Airflow Sensors detect three types of sleep disordered breathing events with only one sensor; apnea, hypopnea and snore.



## DISPOSABLE AIRFLOW SENSORS *Available in Small, Medium & Large*

Dymedix TriplePlay™ PVDF Airflow Sensors respond to both thermal and pressure changes resulting in very crisp and linear airflow waveforms.



## REUSABLE AIRFLOW SENSORS *Available in Small & Medium*

Dymedix TriplePlay™ PVDF Airflow Sensors have an incredibly fast response time of just 5 milliseconds, far surpassing the responsiveness of traditional thermistors or thermocouples.

# FM

## AIRFLOW FILTRATION MODULE

Dymedix Airflow Sensors are used with a choice of five different Filtration Module (FM) Interface Cables that provide users a variety of waveform options and combinations. Users are able to record Apnea, Hypopnea, UARS and Snore all with one airflow sensor.

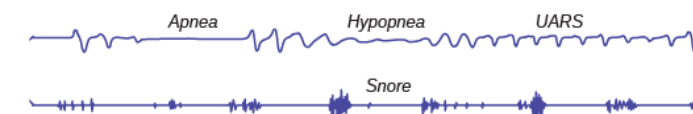


**FM1 AIRFLOW FILTRATION MODULE**  
Provides one output with smooth sinusoidal waveforms focusing on identification of apnea and hypopnea events



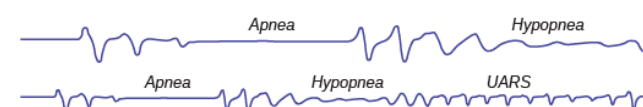
**FM2 AIRFLOW FILTRATION MODULE**  
Adds more subtle changes in the airflow signal often associated with flow limitation and UARS

**FM2 AIRFLOW FILTRATION MODULE**  
Adds more subtle changes in the airflow signal often associated with flow limitation and UARS

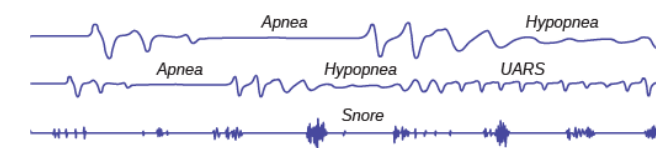


**FM3 AIRFLOW FILTRATION MODULE**  
Adds a second output channel of snore data, all originating from one PVDF airflow sensor.

**FM3 AIRFLOW FILTRATION MODULE**  
Adds a second output channel of snore data, all originating from one PVDF airflow sensor.



**FM4 AIRFLOW FILTRATION MODULE**  
Provides two separate channels of airflow waveforms, one for scoring apnea events, and another for scoring hypopnea events.



**FM5 AIRFLOW FILTRATION MODULE**  
Provides the same functionality as the FM4, but includes an additional snore channel.

**FM4 AIRFLOW FILTRATION MODULE**  
Provides two separate channels of airflow waveforms, one for scoring apnea events, and another for scoring hypopnea events.



# PerfectFit<sup>TM</sup>

## EFFORT BELT 2

Dymedix PerfectFit2<sup>TM</sup> Reusable Effort Belts use PVDF technology which responds to both strain and pressure providing the most sensitive and responsive respiratory effort system in the industry. Standard and RIP signal options are available. All Dymedix Effort Belts are AASM compliant.



### PERFECTFIT2<sup>TM</sup> RESPIRATORY EFFORT BELTS

Incorporates a permanently attached interface cable with a small passive in-line module for signal conditioning. The PerfectFit2<sup>TM</sup> provides very accurate effort waveforms while maintaining consistent polarity. The durable, low profile buckles ensure patient comfort. AASM Compliant.



### THE PERFECTFIT2<sup>TM</sup> RS EFFORT BELT

Provides the same features as the PerfectFit2 system but produces a RIP signal (inductance) output specifically designed for PSG systems (Embla®, Grael® and Alice® 6) that contain integrated RIP circuitry in the electrode input box. No more wire woven belts!



# PerfectFit<sup>TM</sup><sub>3D</sub>

EFFORT BELT

The PerfectFit 3D<sup>TM</sup> Effort System provides users with two reusable sensor modules that incorporate Button-Hole<sup>TM</sup> connectors to where disposable effort belt material is connected. The PerfectFit 3D<sup>TM</sup> is a perfect semi-disposable solution for PSG and HST respiratory effort applications.

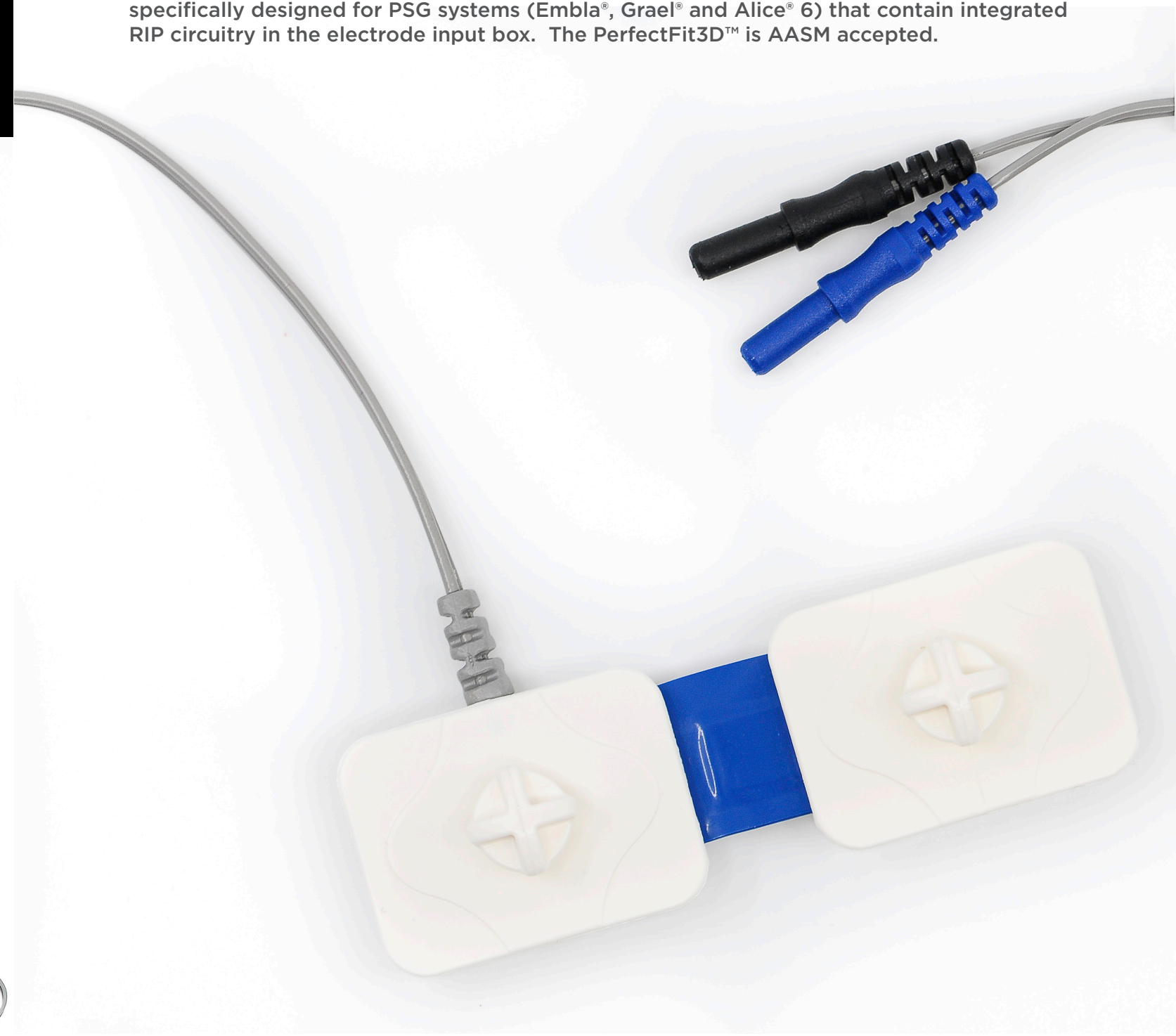


## PERFECT FIT3D SENSOR MODULES

Respond to both strain and pressure resulting in the most sensitive and reliable effort belt system available. The disposable Button-Hole<sup>TM</sup> strapping material fits all sizes and comes in a convenient 50 yard dispenser (20 patients). The PerfectFit3D<sup>TM</sup> effort system incorporates an easy plug-and-play interface, cut-to-size straps, and does not allow for polarity reversals during a recording

The PerfectFit3D<sup>TM</sup> Effort Kit is priced at nearly HALF the cost of RIP effort belts and is compatible with both adult and pediatric patient populations.

The PerfectFit3D<sup>TM</sup> RS Effort Belt option produces a RIP signal (inductance) output specifically designed for PSG systems (Embla®, Graef® and Alice® 6) that contain integrated RIP circuitry in the electrode input box. The PerfectFit3D<sup>TM</sup> is AASM accepted.





# FastTrack™

## EFFORT PACK

The First Completely Disposable Respiratory Effort System. No more cleaning!  
Just Plug and Play, Throw it Away!

### FAST TRACK™ EFFORT PACK

The FastTrack™ Effort Pack is the most effective infection control solution available to sleep labs. Each FastTrack™ Effort Pack includes single use Chest and Abdomen effort belts incorporating our cut-to-size Button-Hole™ strap system.

The FastTrack™ Effort Pack is ideal for HST applications as the belts allow for a very simple in-home application and can simply be discarded after the recording. No need to return to the sleep lab.

As with all Dymedix respiratory effort systems, the FastTrack™ Effort Pack sensor responds to both strain and pressure providing a very reliable and sensitive effort belt in all sleeping positions. There is no possibility for polarity reversal with the FastTrack™ Effort Pack

The FastTrack™ Effort Pack is available in both adult and pediatric sizes and is compatible with all PSG systems including those with integrated RIP circuitry (Embla®, Grael® and Alice® 6). An optional SUM module is also available.



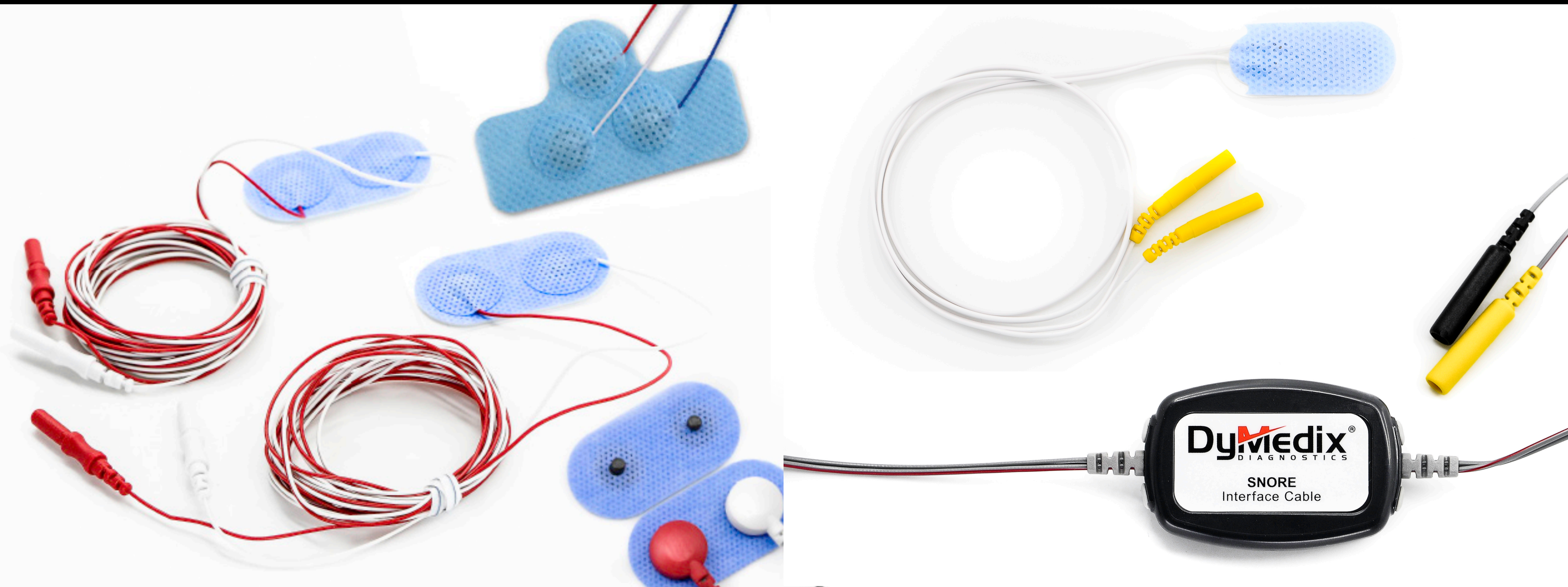


# SURFACE ELECTRODES

**AccuSnore™**  
DISPOSABLE SNORE SENSOR

In the interest of ensuring ease of use for clinicians and promoting infection control through the use of disposable supplies, Dymedix Diagnostics produces Surface Electrodes to detect EMG activity from the Chin, Leg and Intercostal locations. We also provide PVDF Snore Sensors in Reusable and Disposable versions.

AccuSnore™ Disposable Snore Sensor is the only disposable snore sensor available. Using PVDF technology the AccuSnore™ sensor provides superior sensitivity compared to conventional piezo snore sensors. The adhesive backing allows for multiple placement locations during testing to ensure accurate waveforms. The interface cable is available in keyhole or 1.5 mm connectors. Sensors are sold in packs of 10 or 50. One size fits all.





# Lullaby™

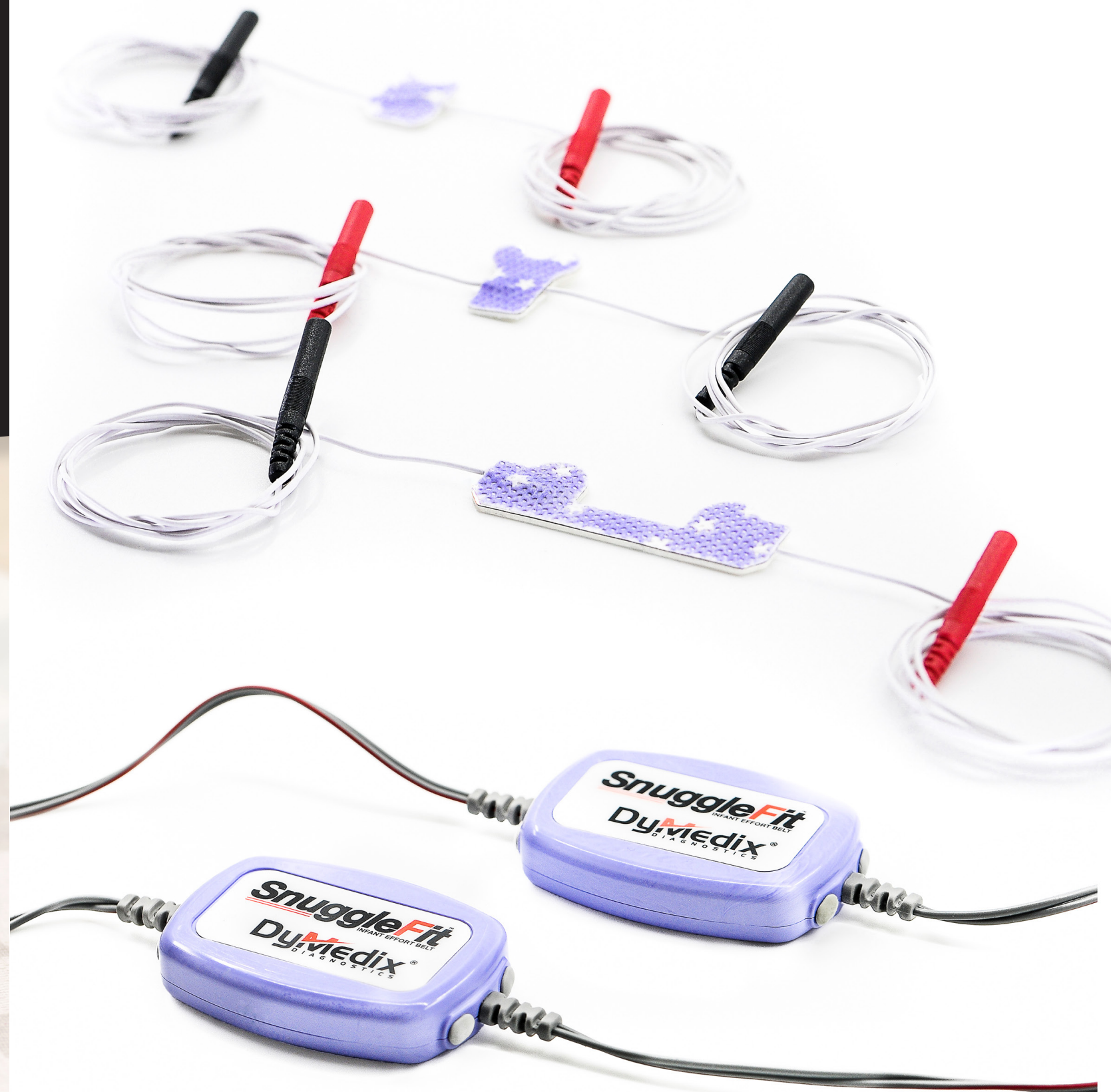
## PEDIATRIC SENSORS

The most advanced and innovative family of diagnostic sleep sensors made especially for pediatric patients.



### LULLABY™ PEDIATRIC SENSORS

Dymedix Diagnostics designs sleep sensors with comfort and accuracy in mind for our most sensitive patients, infants and children. Using PVDF technology, respiratory effort, movement and airflow monitoring has never been more accurate and easier for technologists and patients. Our Lullaby™ family of pediatric sensors are available in both disposable and reusable options.



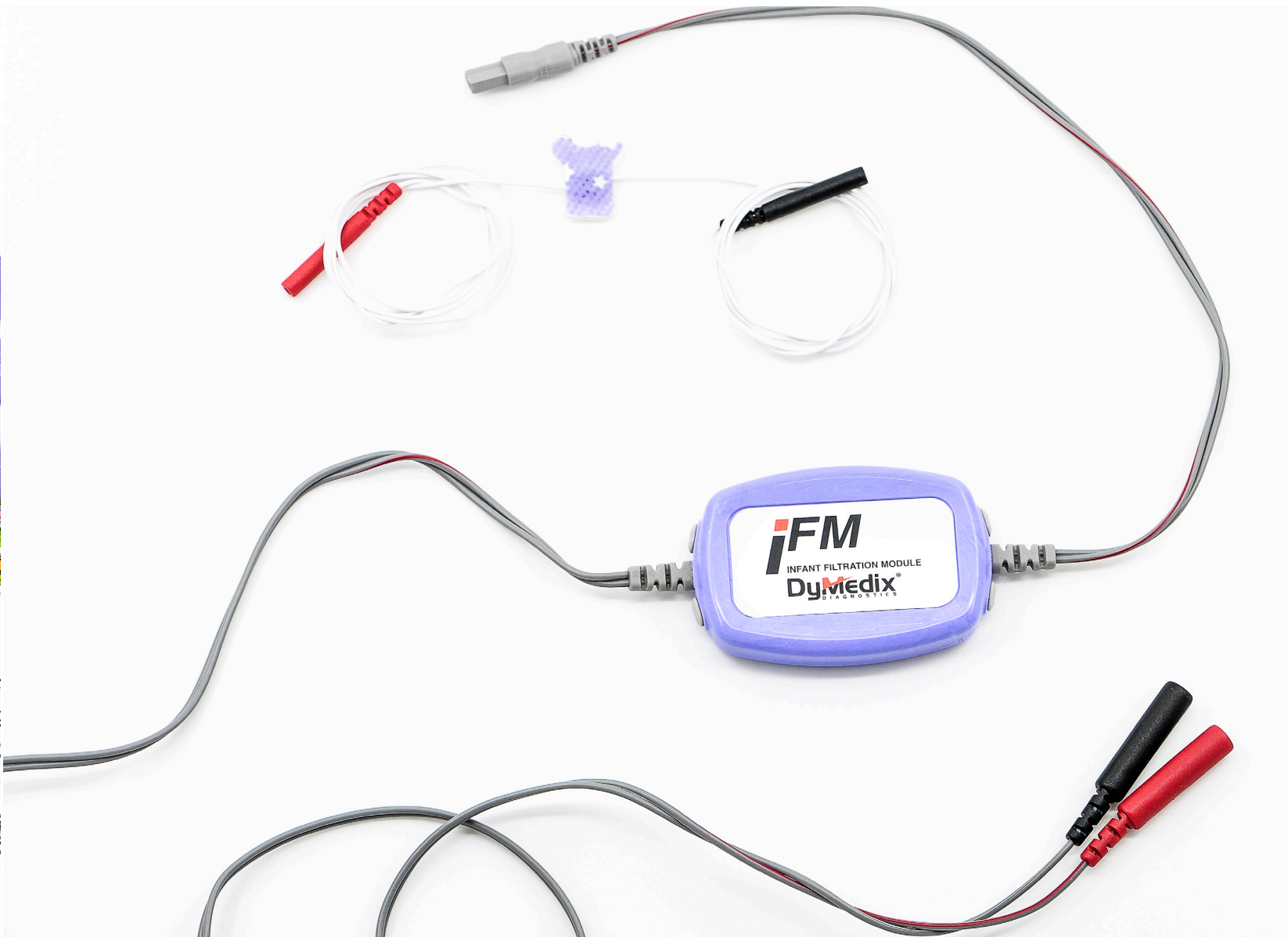




The SnuggleFit™ Infant Effort Belt is a disposable respiratory effort system designed specifically for infants. The SnuggleFit™ responds to both strain and pressure, and incorporates our disposable cut-to-size Button-Hole™ disposable belt material. The optional Comfort Wrap is also available for extra sensitive pediatric patients.



The Dymedix iFM is a specialized airflow interface cable for use with the Lullaby™ family pediatric airflow sensors. It incorporates a filtration module that boosts and filters airflow waveforms allowing for more accurate and detailed sensing of airflow activity from neonate and infant patients.





ALWAYS INNOVATING™

# Dy<sup>M</sup>edix®

DIAGNOSTICS

---

**Lullaby**™  
PEDIATRIC SENSORS

**SnuggleFit**™  
INFANT EFFORT BELT

**iFM**  
INFANT FILTRATION MODULE

**TriplePlay**™  
AIRFLOW SENSOR

**FM**  
AIRFLOW FILTRATION MODULE

**PerfectFit**™  
EFFORT BELT 2

**PerfectFit**™  
EFFORT BELT 3D

**FastTrack**  
EFFORT PACK

**AccuSnore**™  
DISPOSABLE SNORE SENSOR

Visit [dymedix.com](http://dymedix.com) for specific PSG and HST product compatibility.

Dymedix Diagnostics® | (888) 212-1100